



The Emergency Operations Plan

Presented by
Cathy Montgomery, RN, CASC

St. Louis Missouri 5/4/17



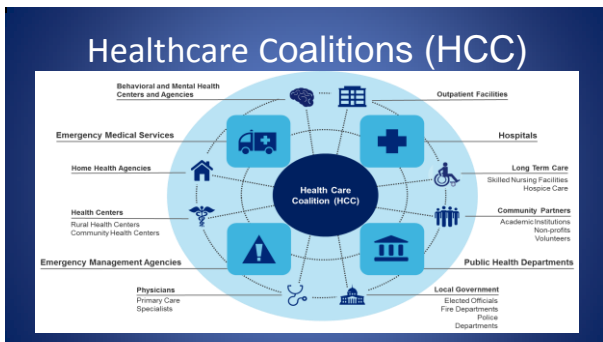
Objectives

- Know imminent deadline
- Understand how to complete a HVA
- What goes into an EOP
- How does an EOP differ from P&P's
- What are the training and testing requirements





- Providers/Suppliers**
Facilities Impacted by the Emergency Preparedness Rule
1. Hospitals
 2. Religious Nonmedical Health Care Institutions (RNHCIs)
 3. Ambulatory Surgical Centers (ASCs)
 4. Hospices
 5. Psychiatric Residential Treatment Facilities (PRTFs)
 6. All-Inclusive Care for the Elderly (PACE)
 7. Transplant Centers
 8. Long-Term Care (LTC) Facilities
 9. Intermediate Care Facilities for Individuals with Intellectual Disabilities (ICF/IID)
 10. Home Health Agencies (HHAs)
 11. Comprehensive Outpatient Rehabilitation Facilities (CORFs)
 12. Critical Access Hospitals (CAHs)
 13. Clinics, Rehabilitation Agencies, and Public Health Agencies as Providers of Outpatient Physical Therapy and Speech-Language Pathology Services
 14. Community Mental Health Centers (CMHCs)
 15. Organ Procurement Organizations (OPOs)
 16. Rural Health Clinics (RHCs) and Federally Qualified Health Centers (FQHCs)
 17. End-Stage Renal Disease (ESRD) Facilities



Federal Register

- Ambulatory Surgical Centers (ASCs) – section 1832 (a) (2) (F)(i) of the Act and 42 CFR 416.2 and 416.40 through 416.52.

Vo. 81, No. 180 Sept, 16, 2016

DEPARTMENT OF HEALTH & HUMAN SERVICES
Centers for Medicare & Medicaid Services
7500 Security Boulevard, Mail Stop C2-23.10
Baltimore, Maryland 21244-1890



Center for Clinical Standards and Quality/Survey & Certification Group

Ref: S&C 17-05-ALL

DATE: October 28, 2016

TO: State Survey Agency Directors

FROM: Director
Survey and Certification Group

SUBJECT: Information on the Implementation Plans for the Emergency Preparedness Regulation

Memorandum Summary

- **Information for Implementation:** The Centers for Medicare & Medicaid Services (CMS) Survey and Certification Group is providing general information regarding the implementation plans for the new Emergency Preparedness Rule. The information addresses the implementation date for providers and suppliers, the development of Interpretive Guidelines (IGs), surveyor training and resources available to assist in the implementation of this regulation.
- **Affects all 17 providers and suppliers:** The regulation affects all 17 providers and suppliers and must be fully implemented to November 15, 2017.

Appendix L

State Operations Manual Appendix L - Guidance for Surveyors: Ambulatory Surgical Centers

Table of Contents
(Rev. 13*, 04-01-15)



Risk Assessment & Planning

- Risk Assessment - HVA/BIA
- All hazards approach integrated, specific to your location, past & future occurrences
- Update annually & prn
- Update for cause or discovery

EVENT	PROBABILITY <small>Likelihood this will occur</small>	SEVERITY - (MAGNITUDE - MITIGATION)						RISK <small>Relative threat*</small>
		HUMAN IMPACT <small>Possibility of death or injury</small>	PROPERTY IMPACT <small>Physical losses and damages</small>	BUSINESS IMPACT <small>Interruption of services</small>	PREPAREDNESS <small>Preplanning</small>	INTERNAL RESPONSE <small>Time effectiveness resources</small>	EXTERNAL RESPONSE <small>Community Mutual Aid staff and supplies</small>	
SCORE	1=Not 2=Low 3=Moderate 4=High	1=Not 2=Low 3=Moderate 4=High	1=Not 2=Low 3=Moderate 4=High	1=Not 2=Low 3=Moderate 4=High	1=Not 2=Low 3=Moderate 4=Low or none	1=Not 2=High 3=Low or none	1=Not 2=High 3=Low or none	0 - 100%
Hurricane	1		2		3			0%
Tornado								0%
Severe Thunderstorm								0%
Snow Fall								0%
Blizzard								0%
Ice Storm								0%
Earthquake								0%
Tidal Wave								0%
Temperature Extremes								0%
Drought								0%
Flood External								0%
Wild Fire								0%
Landslide								0%
Dam Inundation								0%
Volcano								0%
Epidemic								0%
AVERAGE SCORE	0.00	0.00	0.00	0.00	0.00	0.00	0.00	0%

*Threat increases with percentage

Policies & Procedures

- Earthquakes
- Tornadoes
- Hurricane
- Flooding
- Facility Evacuation
- Fires
- Cyber Security Attack
- Violence in the Workplace
- Infectious Disease Outbreak
- Active Shooter
- Bomb Scare
- Loss of Water, Electric etc.



Surgery Center XYZ

EMERGENCY OPERATIONS PLAN

Emergency Operations Plan EOP

- Based on the HVA
- Follows Federal and State laws
- Coordination
- Update at least annually

EOP

- Declarations
- Introduction
- Emergency Plan
- Policies & Procedures
- Communications
- Training
- Testing
- Exhibits
- Situational Risk Annexes



Declaration

1. Date Reviewed 2/21/17
2. Date Approved 2/21/17
3. Date sent to Local and State Departments 2/22/17

Introduction

- Demographic Information
- Construction Information
- Contact Information for facility
- Contact information for plan



Emergency Plan

- Risk Assessment – Exhibit 3
- Command and Control – Organizational Chart Exhibit 4
- Back up plan- Delegation of Authority Exhibit 5

Authorities

Key Personnel and Orders of Succession

Essential Function	Primary	Successor 1	Successor 2	Successor 3
DIRECT OPERATIONS	DON	OR MANAGER	MEDICAL DIRECTOR	SURGEON
COMMUNICATION	ADMINISTRATOR	MEDICAL DIRECTOR	DON	POST OP TEAM LEADER
STAFF/PT TRACKING	RECEPTIONIST	STERILE PROCESSING	SCRUB TECH	RN
UTILITY ASSESSMENT	BOM	RN	C-ARM TECH	RN

Outside Authorities

1. Fourth District can be divided into 16 sub-districts
<http://mydistricts.in.gov/publications/index.html>

Legend:

- 1. 1st.District@indiana.gov 219-247-0000
- 2. 2nd.District@indiana.gov 219-247-0000
- 3. 3rd.District@indiana.gov 219-247-0000
- 4. 4th.District@indiana.gov 219-247-0000
- 5. 5th.District@indiana.gov 219-247-0000
- 6. 6th.District@indiana.gov 219-247-0000
- 7. 7th.District@indiana.gov 219-247-0000
- 8. 8th.District@indiana.gov 219-247-0000
- 9. 9th.District@indiana.gov 219-247-0000
- 10. 10th.District@indiana.gov 219-247-0000
- 11. 11th.District@indiana.gov 219-247-0000
- 12. 12th.District@indiana.gov 219-247-0000
- 13. 13th.District@indiana.gov 219-247-0000
- 14. 14th.District@indiana.gov 219-247-0000
- 15. 15th.District@indiana.gov 219-247-0000
- 16. 16th.District@indiana.gov 219-247-0000

ESF8 Network – July 27, 2016

EMS DRCS highlighted in GREEN

Region 1

- 1. 1st.Region@indiana.gov 219-247-0000
- 2. 2nd.Region@indiana.gov 219-247-0000
- 3. 3rd.Region@indiana.gov 219-247-0000
- 4. 4th.Region@indiana.gov 219-247-0000
- 5. 5th.Region@indiana.gov 219-247-0000
- 6. 6th.Region@indiana.gov 219-247-0000
- 7. 7th.Region@indiana.gov 219-247-0000
- 8. 8th.Region@indiana.gov 219-247-0000
- 9. 9th.Region@indiana.gov 219-247-0000
- 10. 10th.Region@indiana.gov 219-247-0000
- 11. 11th.Region@indiana.gov 219-247-0000
- 12. 12th.Region@indiana.gov 219-247-0000
- 13. 13th.Region@indiana.gov 219-247-0000
- 14. 14th.Region@indiana.gov 219-247-0000
- 15. 15th.Region@indiana.gov 219-247-0000
- 16. 16th.Region@indiana.gov 219-247-0000

Region 2

- 1. 1st.Region2@indiana.gov 219-247-0000
- 2. 2nd.Region2@indiana.gov 219-247-0000
- 3. 3rd.Region2@indiana.gov 219-247-0000
- 4. 4th.Region2@indiana.gov 219-247-0000
- 5. 5th.Region2@indiana.gov 219-247-0000
- 6. 6th.Region2@indiana.gov 219-247-0000
- 7. 7th.Region2@indiana.gov 219-247-0000
- 8. 8th.Region2@indiana.gov 219-247-0000
- 9. 9th.Region2@indiana.gov 219-247-0000
- 10. 10th.Region2@indiana.gov 219-247-0000
- 11. 11th.Region2@indiana.gov 219-247-0000
- 12. 12th.Region2@indiana.gov 219-247-0000
- 13. 13th.Region2@indiana.gov 219-247-0000
- 14. 14th.Region2@indiana.gov 219-247-0000
- 15. 15th.Region2@indiana.gov 219-247-0000
- 16. 16th.Region2@indiana.gov 219-247-0000

Region 3

- 1. 1st.Region3@indiana.gov 219-247-0000
- 2. 2nd.Region3@indiana.gov 219-247-0000
- 3. 3rd.Region3@indiana.gov 219-247-0000
- 4. 4th.Region3@indiana.gov 219-247-0000
- 5. 5th.Region3@indiana.gov 219-247-0000
- 6. 6th.Region3@indiana.gov 219-247-0000
- 7. 7th.Region3@indiana.gov 219-247-0000
- 8. 8th.Region3@indiana.gov 219-247-0000
- 9. 9th.Region3@indiana.gov 219-247-0000
- 10. 10th.Region3@indiana.gov 219-247-0000
- 11. 11th.Region3@indiana.gov 219-247-0000
- 12. 12th.Region3@indiana.gov 219-247-0000
- 13. 13th.Region3@indiana.gov 219-247-0000
- 14. 14th.Region3@indiana.gov 219-247-0000
- 15. 15th.Region3@indiana.gov 219-247-0000
- 16. 16th.Region3@indiana.gov 219-247-0000

Region 4

- 1. 1st.Region4@indiana.gov 219-247-0000
- 2. 2nd.Region4@indiana.gov 219-247-0000
- 3. 3rd.Region4@indiana.gov 219-247-0000
- 4. 4th.Region4@indiana.gov 219-247-0000
- 5. 5th.Region4@indiana.gov 219-247-0000
- 6. 6th.Region4@indiana.gov 219-247-0000
- 7. 7th.Region4@indiana.gov 219-247-0000
- 8. 8th.Region4@indiana.gov 219-247-0000
- 9. 9th.Region4@indiana.gov 219-247-0000
- 10. 10th.Region4@indiana.gov 219-247-0000
- 11. 11th.Region4@indiana.gov 219-247-0000
- 12. 12th.Region4@indiana.gov 219-247-0000
- 13. 13th.Region4@indiana.gov 219-247-0000
- 14. 14th.Region4@indiana.gov 219-247-0000
- 15.

Policies & Procedures

- Tracking of patients, staff and visitors
- Facility Lockdown
- Shelter in Place (SIP)
- Evacuation
- Suspension of Services
- Documentation

Communications

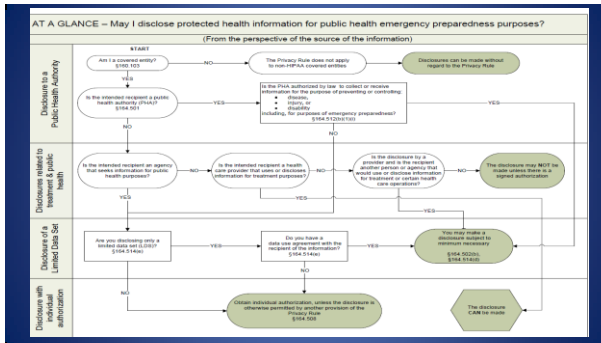
Procedures & operations



- Communications
 - Telephone
 - Back-up systems
 - Radio (VHF/800)
 - Satellite phone
 - Walkie – Talkies
 - HAM radio
 - Fax

Communication

- Internal
- External
- Patients & Visitors
- Healthcare Providers



Training & Testing

- At hire – P&P
- Annually – Demonstrate competency
- Drills & Exercises – per CCN Number
- Is not a calendar year

DEADLINE 11/15/17

Drills

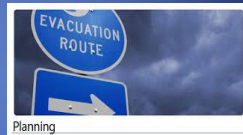
Participation in a full-scale exercise that is community-based or when a community-based exercise is not accessible, an individual, facility-based exercise.

Full-Scale

A full scale exercise is a multi-agency, multijurisdictional, multi-discipline exercise involving functional (for example, joint field office, emergency operation centers, etc.) and/or “boots on the ground” response (for example firefighters decontaminating mock victims) .

Community

- Within a state
- Multi-state
- Integrated approach
- Healthcare coalitions



Drills

Conduct an additional exercise that may include, but is not limited to the following:

- A second full-scale exercise that is individual, facility-based.
- A tabletop exercise that includes a group discussion led by a facilitator, using a narrated, clinically-relevant emergency scenario, and a set of problem statements, directed messages, or prepared questions designed to challenge an emergency plan.

Tabletop Exercise (TTX)

- Leader (facilitator)
- Group Discussion
- Simulated Scenarios
- Clinically relevant emergency

CMS Suggested Exercises

- Earthquakes
- Tornadoes
- Hurricane
- Flooding
- Fires
- Cyber Security Attack
- Power-outage
- Active Shooter

HAZARD AND VULNERABILITY ASSESSMENT TOOL
NATURAL DISASTERS EVENTS

Hazard	Frequency	Severity				Vulnerability	Risk
		Low	Medium	High	Critical		
Earthquake	1	1	2	3	4	1	1
Tornado	2	1	2	3	4	1	2
Hurricane	3	1	2	3	4	1	3
Flooding	4	1	2	3	4	1	4
Fires	5	1	2	3	4	1	5
Cyber Security Attack	6	1	2	3	4	1	6
Power-outage	7	1	2	3	4	1	7
Active Shooter	8	1	2	3	4	1	8
Other	9	1	2	3	4	1	9
Grand Total	128	841	851	128	128	128	128

SUMMARY

1. HVA
2. P&P
3. Plan
4. Coordination
5. Drills



Additional Help

<https://www.cms.gov/Medicare/Provider-Enrollment-and-Certification/SurveyCertEmergPrep/index.html>

EOP



Final thoughts....questions?

EOP

Please email your questions and comments to:

cathy@excellentiagroup.com

Excellentia Advisory Group, LLC

1-636-875-5088
